

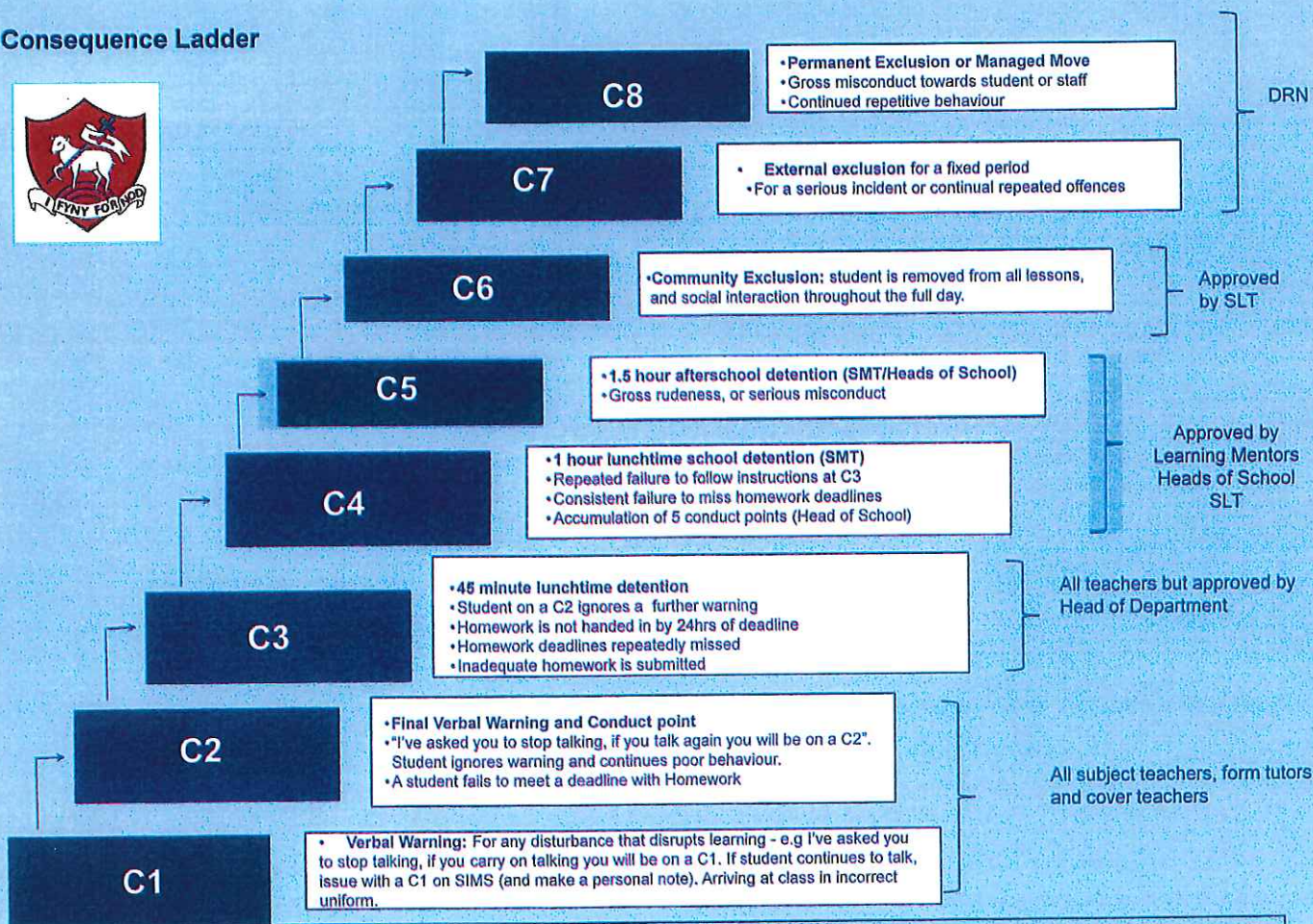
# Behaviour for Learning Expectations

in class  
around school  
towards others

<b>Learning</b>	<p>Students must make studying and learning their first priority. Lessons are for learning; students should not have any breaks during classes (single or double lessons) e.g. for getting drinks. Students must not distract others from learning and making progress e.g. by talking in lessons, shouting out or making inappropriate noises.</p>
<b>Interacting with others</b>	<p>Students should show consideration and respect for others at all times, inside and outside of school and lessons. Students should foster a sense of community. Students are expected to be good ambassadors for the school e.g. travelling to and from school, when representing the school, and on school trips. Any type of bullying will not be tolerated.</p>
<b>Classwork</b>	<p>It is essential that every student follows instructions the first time they are given to them by staff. Students must raise their hand if they have a question during lessons. Students should be 100% focused and on task during lessons. Students should look after their working environment: classrooms should be clean, tidy and free from litter at all times. Student must not eat during lessons.</p>
<b>Homework</b>	<p>All homework must be completed and submitted by the date set (deadlines must be met). Students should take responsibility for personal study by meeting all work requirements and preparing thoroughly for assessments Students should use study time effectively and seek to make exceptional progress with every piece of work.</p>
<b>Punctuality</b>	<p>Students are expected to know where their lessons are and arrive at every lesson on time, moving purposefully between classrooms e.g. not getting drinks or going to lockers in between lesson time. Students should attend meetings with staff at the set time.</p>
<b>Organisation</b>	<p>Students must bring with them all necessary equipment for their lessons, including their planner for every lesson, games/PE kit, and lab coats when appropriate. Students must use all equipment safely and for the purpose instructed by the teacher. Students must return letters/ consent forms/ reply slips by the set date. All personal property must be clearly named.</p>
<b>Uniform</b>	<p>Students must wear full school uniform including ties and school shoes. This includes in the school canteen and lunch queue. Mobile phones, hand held consoles, iPods and all other audio equipment must be switched off during lessons unless otherwise directed by a member of staff Headphones and audio equipment must not be a part of school uniform.</p>

## Behaviour for Learning

### Consequence Ladder



Every Consequence must be processed using SIMS (and in students planners where appropriate and suitable)